

Overview

Engel e-victory 310/90 + easix KR10 Agilus, 2020

Engel

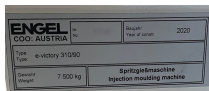
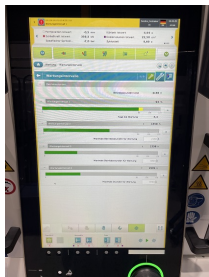
Product number: 50033



Price

Price on request

Prices excl. VAT plus shipping costs



Description

* All prices excl. VAT plus shipping costs and possible delivery charges, if not stated otherwise.



terms of delivery: EXW (ex Works)
delivery time: on request
terms of payment: 100% prior to delivery

Product information

01-manufacturer:	Engel
02-type:	e-victory 310/90 + easix KR10 Agilus
03-year of construction:	2020
04-condition:	aus laufender Produktion
05-operating hours:	ca. 4.200
10-CLAMPING UNIT:	-
11-clamping force:	90 t
12-opening path:	500 mm
13-mould installation height min:	300 mm
14-mould installation height max.:	500 mm
15-tie bar distance (h x v):	holmlos
16-plate dimension (h x v):	740 x 680 mm
17-centering (fix- movingplate):	125 mm
20-INJECTION UNIT:	IU310
21-screw diameter:	30 mm
22-injection weight in polystyrol:	123 g
23-stroke volume:	113 cm ³
24-injection pressure:	2.400 bar
30-CONTROL:	CC300
31-screen language:	DE
32-operating manual:	DE

40-EQUIPMENT:	-
41-core pulls:	1 x hydr.
42-air valves:	1
43-hot runner control devices :	24
44-robot interface:	ER-IS für Engel Roboter
45-other equipment :	Siehe Auftragsbestätigung, Reinraumausrüstung
50-GENERAL DATA:	-
51-installed heating capacity:	11,2 kW
52-pump drive power:	entfällt
53-total installed power:	Motor + Heizung
54-total weight:	7.500 kg
55-total size L x B x H:	4,9 x 1,6 x 2,1 m